

ISSUE NO. 20

SOBO EVENTS

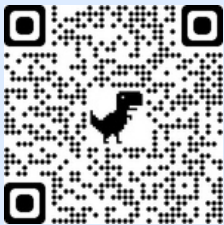
August 4 - October 5, 2024

HIGHLIGHTS

Whiskey on the Waterfront  
(8/17 & 9/21)

Pride of Baltimore II Tours  
(9/12-15)

Ya Gotta Regatta (9/28)



Scan for the latest updates and more event info

Compiled by Rani Murray

- 8/4 – **Fee-Free Admission to Fort McHenry**, 2400 E. Fort Ave. No admission charged in honor of the Great American Outdoors Act.
- 8/4 – **Inner Harbor Paddle Kayak Tour**, Maryland Science Center promenade, 401 Light St. Guided tour for experienced paddlers. 9am-12pm. \$
- 8/4 – **Pickup Softball Game**, Solo Gibbs Park, 1044 Leadenhall St. Sponsored by the Catholic Community of South Baltimore. 1-2pm.
- 8/5 – **Video Game Challenge**, Pratt Library, 1251 Light St. Play classic Nintendo games. 3pm.
- 8/5 – **Wellness on the Waterfront: Boot Camp**, Rye Street Park, 301 E. Cromwell St. Outside 45-minute class with Marissa Walch. 6pm.
- 8/5 – **Music: FlowPoetry and Noah Lehrman**, The 8x10, 10 E. Cross St. Doors at 7pm. \$
- 8/6 – **Sidewalk Chalk Art**, Pratt Library, 1251 Light St. 11am.
- 8/7 – **Inner Harbor Paddle and Flow**, Inner Harbor Marina, 400 Key Hwy. Guided 45-minute paddle followed by yoga on land. 6-7:30am. \$
- 8/7 – **Qigong: Moving Meditation**, Pratt Library, 1251 Light St. Decrease stress and increase vitality. 1pm.
- 8/7 – **Wellness on the Waterfront: Yoga**, Rye Street Park, 301 E. Cromwell St. Outside 45-minute vinyasa (flow) class with Marissa Walch. 6pm.
- 8/7 – **Sunset Salsa**, Port Covington Marina, 321 E. Cromwell St. Latin dance lessons and music, with local food and drink. 7-11pm.
- 8/8 – **Music: Trinidad and Tobago Baltimore Steel Orchestra**, Pratt Library, 1251 Light St. 11am-1pm.
- 8/8 – **South Baltimore Book Lovers Community Cookout**, SBLC Learning Works, 28 E. Ostend St. Celebrate National Book Lovers Day with book readings and a free cookout. 5:30-8pm.
- 8/8 – **Community Run/Walk**, Harry's Bar, 1036 E. Fort Ave. Distance 3-6 miles. 6:30pm.

Continued on page 11

NEXT ISSUE:  
OCTOBER 4



Connecting the communities of the South Baltimore (Md.) peninsula. Published bimonthly by South Baltimore United.



RIVERSIDE PARK POOL played host to a wacky array of water sports – from Jousting Rodeo to Whack-a-Gnome – at the July 27 opening performance of “Splash Games: A Water Ballet of Imaginary Sports,” a faux Olympics tribute created by Baltimore’s Fluid Movement. The merriment continues on August 3 and 4 at Clifton Park Pool. Photo by Mary Braman.

‘Tough Ride’ on Peninsula After FSK Bridge Collapse

After the cargo ship Dali ran into the Francis Scott Key Bridge on March 26 and caused it to collapse, the Port of Baltimore on the Patapsco River north of the bridge — a key element of the region’s economy — was cut off from the rest of the world.

Many businesses and workers who rely on the cargo ships that come in and out of the port and the goods they bring were suddenly left in limbo, including people who live and work in South Baltimore and businesses that call the peninsula home.

One part of the South Baltimore community that was impacted immediately by the Key Bridge collapse were the longshoremen who load and unload the ships that come into Locust Point and the rest of the port. They were in a state of shock, said Richard P. Krueger, Jr., president of International Longshoremen’s Association (ILA) Local 953, one of the local unions representing longshoremen. They went from working full time to no time, he said.

During that closure of the port, he said union members received unemployment benefits from the State of Maryland and support from the ILA and charities. While the support did not equal their usual pay, it was enough to get by, Krueger said.

Scott Cowan, president of ILA Local 333, another local longshoreman union, said that his members received the same support as Local 953.

The period after the collapse was a “tough ride,” he said, but since the channel opened, they have been doing better.

The South Baltimore peninsula is home to several major industrial operations that rely on Baltimore’s waterway. One of the most iconic of these is the Domino Sugar refinery.

The refinery was fortunate to have a good supply of raw sugar on hand, said Peter O’Malley, vice president of corporate relations for American Sugar Refining, Inc., which owns Domino Sugar. A shipment had arrived just before the Key Bridge collapsed. As a result, the refinery was able to continue to operate and no employees went without paychecks, O’Malley said.

The raw sugar they couldn’t store in their Locust Point refinery was stored on Pier Two in Canton. As the channel slowly opened back up, they were able to take that stored sugar back to the refinery, O’Malley said.

Domino’s employees operate the cranes that take the sugar off the ships, he said, and longshoremen were able to work on the ships and help with the unloading process.

Operation at Westway Feed Products, east of the Domino refinery, followed a similar path. They had received a shipment two days before the bridge collapse, said Matt Belstra, Westway’s Baltimore plant manager. Because Westway only receives a

shipment every three to four months, they were able to get through the channel closure alright, though they were close to getting off schedule, Belstra said. It “was scary for a little bit,” he said.

It was a different story at C. Steinweg (Baltimore), Inc.’s operation next to Fort McHenry. According to facilities manager Marc Kiriou, Steinweg experienced some loss in business because there were no ships in the terminal, so their customers had to go elsewhere. He said that Steinweg kept paying their Baltimore employees since the company guarantees them 48 hours of work per week, but they had to go without overtime hours.

Since the port’s shipping channel opened fully on June 10, business on the city’s waterway is getting back to normal. The three major cruise lines that operate from Locust Point have resumed their voyages, starting with Royal Caribbean’s Vision of the Seas on May 25 and Carnival Cruise Line’s Pride on May 26. All three cruise lines operating out of the port have trips scheduled now, according to their websites.

ILA Local 953 President Krueger said that it will take time to work back to 100 percent. Cowan, his counterpart in ILA Local 333, said the port will rebound and be a major force on the East Coast going forward.

– A. W. Taylor

FROM THE EDITOR

SoBo Park Upgrades Shine, But One More Big One to Go

We are definitely spoiled here on the South Baltimore peninsula to have so many parks literally in our backyards. (Can you name all 10?) From Solo Gibbs Park in Sharp-Leadenhall on the west to Fort McHenry at the tip of Locust Point on the east, our parks provide a variety of facilities and green spaces for playing, gathering, or just relaxing.

And as you’ll read in this issue, SoBo park space just keeps getting better. In June, the renovated fields and ball courts in lower Riverside Park opened (see page 3). And Federal Hill Park will be getting a make-over this fall to add new gardens and safety features (see this page).

Next up with an anticipated start date in 2025 are the long-awaited improvements to Solo Gibbs Park, which will see a new multipurpose field and basketball courts (Peninsula Post, June 2022). We’ll keep you posted on the progress as it happens.

– Steve Cole, Editor-in-Chief

South Baltimore Peninsula Post

is published bimonthly by South Baltimore United, Inc. 145 W. Ostend St., Suite 600 Baltimore, MD 21230 Tel. 410-340-8819

Staff: Steve Cole (Editor-in-Chief)

Contributors: Mary Braman, Rachel Cohen, Mark Hannon, Robert Hardy, Saskia Lindsay, Beth Mayr, Miranda Mowrey, Rani Murray, Jane Seebold, Scott Sheads, Barbara Stanton, A.W. Taylor, John Thomas

To contact the editorial staff with comments, questions, or tips, email: editor@sobopost.org

For advertising rates and schedule, email: advertising@sobopost.org

South Baltimore United, Inc. is a 501(c)(3) nonprofit organization.



sobopost.org

Safety, Beautification Upgrades Coming to Federal Hill Park

Nearly \$50,000 in improvements to Federal Hill Park are planned for this fall, thanks to a South Baltimore Gateway Partnership (SBGP) community grant received by South Harbor Renaissance.

The improvements will include installation of a series of eight, twelve-foot-long planting beds running along the edge of the pathways around the main park entrance and along the main pathways inside the park. These planting beds will showcase approximately 200 native, resilient plant species of varying heights, sizes, and colors. Historic-style post-and-chain fencing with acorn caps will protect the planting beds on all sides.

In addition, removable bollards, which are sturdy, short, vertical posts, will be installed throughout the park in an effort to slow down “high-speed” vehicle traffic in the park.

According to Nigel Crocombe, South Harbor Renaissance board member, Federal Hill Park has attracted heavy vehicle traffic in recent years. The volunteer-based organization dedicated to improving the park is leading these improvement projects.

“One thing that we’ve had a lot of, especially since the pandemic, has been vehicle traffic, full-sized cars and trucks speeding through the park and tailgating in the park,” said Crocombe. “And we also have a lot of ATV and dirt bike activity. We recognize that we can’t fully eliminate that, but what we want to do is try to protect visitors to the park who are most vulnerable,” he added.

Crocombe hopes that the bollards will help resolve this issue and preserve the park grounds and the new beautification efforts. The focus will be on installing them around the playground, in particular, to provide additional protection for the park’s youngest visitors, he said. The bollards will be removable, enabling the park to continue to be a prime location for community events.

“First and foremost, we want to make sure that the park is a safe place for residents and visitors to be able to use and enjoy,” Crocombe said. “And that’s difficult when you’ve got all of these vehicles driving around all over the place. We want to make sure that we’re making the park a safer place, while enhancing and beautifying the park.”



STEEL WAS RISING this summer on the new raw sugar warehouse at the Domino refinery along Key Highway East. By late July, the roof and walls were being added to the structure, which replaces the warehouse that burned in April 2021. The new warehouse will be able to hold 100 million pounds of sugar and is expected to begin operations in early 2025. Photo by Mary Braman.

Crocombe says the goal is to have the improvements completed by late October, with the installation done over a two-week period.

The Federal Hill Park project is one of 24 SBGP local impact grants awarded this spring to nonprofits in South and Southwest Baltimore. Nearly \$1 million in grant funding generated by video lottery terminals, including those in the Horseshoe Casino Baltimore, was awarded in this round of SBGP grants.

“We’re thrilled to fund these upcoming updates to Federal Hill Park through our Community Grants program and are excited to see them take shape,” said Liz Van Oeveren, SBGP’s senior community grants manager. “Supporting park improvements for resilient beautification and safe community access embody SBGP’s strategic focus areas of community revitalization, health and wellness, and environmental sustainability.” – Saskia Lindsay

New Businesses on the South Baltimore Peninsula

- Since our last issue in June, the following businesses have opened on the South Baltimore peninsula:
- CHX Premium Chicken**, 1724 Whetstone Way. American fried chicken tenders, honey buttermilk biscuits, craft lemonades, and bar. 667-260-2866
- Easy Like Sunday**, 1606 Whetstone Way. Breakfast and brunch with locally sourced ingredients, gourmet coffees, and cocktails. 410-697-6207
- Five Star Services**, 1027 Light St. One-stop-shop for cell phones, multi-carrier activations, accessories, and repairs. 410-622-5557

- Little Wing**, 2460 Terrapin Way, Baltimore Peninsula. Boutique café and general store inside ROOST Baltimore offering a coffee bar, pastries, produce, spirits, and home goods. littlewinggoods.com
- Mug Shots Bar and Grill**, 31 E. Cross St. 443-835-1063
- Ruff + Stay**, Federal Hill. Boutique pet-boarding service and day-care facility. ruffstaydogs.com
- Rye Street Tavern**, 225 E. Cromwell St., Baltimore Peninsula. Fine dining featuring fresh seafood and Southern-inspired dishes. 443-662-8000

DONT' FORGET TO TAKE YOUR FAVORITE PFEFFERKORN'S COFFEE DOWNY OSHEN HON!

WE CAN PACK YOUR ORDER IN A SEALED BAG, SO ALL YOU HAVE TO WORRY ABOUT IS CATCHING WAVES!

Pfefferkorn's COFFEE

1200 EAST FORT AVENUE  
BALTIMORE, MD 21230  
410-272-3354

## Park Visitors Welcome Riverside Upgrades

The newly renovated playing fields and ball courts in lower Riverside Park that opened in June were being put to good use throughout July by SoBo neighbors and visitors.

On July 4, people gathered in groups under the trees overlooking the field and some ran the new path around the southern edge of the park.

Mackenzie Tarhow and Joseph Ball played on the new pickleball court. "It's awesome," said Tarhow. "We tried playing with a net in a parking lot, but it didn't work well because the ball would hit a bump and go in different directions."

Owen Spain, wearing a Nike headband and cleats, kicked a soccer ball on the new multipurpose field with Anthony Rich. "We live right over there," Spain said, pointing to Wells Street. "It's great to have this in walking distance."

Chrissy Hertenstein, wearing pink glasses with a matching top, said her 6-year-old son might be the renovation's biggest fan. "He's shy, but here he doesn't have any problem asking to play in a pickup game," she said, as the child played on the new softball field with four other kids and three adults, one dad pitching the ball. "It's life-changing with two small kids," she said. "The kids come home from camp and frolic in the sprinklers."

The construction fences around the multipurpose field and new pickleball and basketball courts came down on June 18, the day a ribbon-cutting ceremony was held to celebrate the renovations. Even before the ceremony, children were dashing about on the combination football-soccer field and chasing each other through the cooling spray of the new sprinkler system installed in the field.

Mayor Brandon Scott, State Delegate Luke Clippinger, and Riverside Neighborhood Association President Rich Badmington were in attendance, along with Tim McDonnell, landscape contractor, and Mark Riccobono, President of the National Federation of the Blind whose offices are just west of the park. Numerous neighbors gathered on benches by the basketball court where the ceremony was held.

Jackson Fisher, a volunteer who coordinates work done in the park, cut the ribbon. "The park has been one of the staples of this community," he said. "Like an old stuffed animal that



has been loved and needed retooling and attention. This is one of the institutions that really bring the community together."

After the ceremony, the mayor, Clippinger, and Fisher broke in the new basketball court by tossing a basketball in the hoop.

Plans for the renovations were conceived in 2016, and construction work in the lower park began in October 2022. Work remains to be done on the red field house between

the playing fields and the park pool. "The field house will have bathrooms that will be open during events and a concession area," said Shannon Waldron, a regular park volunteer who helps plant new trees and clear fallen branches. "They'll finish the field house this fall."

According to Waldron, the new scoreboard on the southern edge of the multipurpose field can be operated via Bluetooth from a smartphone with a code. He also said that the com-



New pickleball and basketball courts at Riverside Park have been getting a workout since the park renovations officially opened in June with a ribbon-cutting ceremony. Photos by Mary Braman.

bined soccer-football goals on the field can be rolled away with the combined muscle power of several people.

The softball and multipurpose fields can be reserved for use by groups and teams starting this fall, according to a Rec and Parks permit department spokesperson. Interested parties will be able to make reservations online through the department's website at [bcrp.baltimorecity.gov/permithome](http://bcrp.baltimorecity.gov/permithome). – Barbara Stanton

## Gen. Lafayette Returns to Fort McHenry for Bicentennial Celebration

When the Marquis de Lafayette first came to America in 1777, he arrived as a 19-year-old French aristocrat eager to join the fight for American independence, which he did as one of George Washington's generals, serving with distinction through the Battle of Yorktown in 1781. When he last came to America in 1824, he arrived to a nationwide hero's welcome during a 13-month tour of all 24 states then in the union, which included a visit to Fort McHenry.

On the afternoon of Monday, October 7, 2024, Lafayette returns to Baltimore as a reenactor, arriving by boat at Fort McHenry as part of a bicentennial celebration that will visit the same states on the same schedule as Lafayette's 1824 visit to America. The American Friends of Lafayette have planned five days of events in Baltimore in honor of the French statesman and defender of democratic principles in this country and around the world.

Lafayette's 1824 tour was a big deal to the new nation. "It was like the Pope coming to America," said Scott Sheads, former National Park Service historian at Fort McHenry. "Over 50,000 citizens lined the Fort Road to get a glimpse of Lafayette as he traveled from Fort McHenry into Baltimore for a series of events."

At the Fort, Lafayette met with other veterans of the American Revolution and was honored at a reception inside the actual field tent that George Washington had used throughout the war, which was brought to the Fort for the occasion. The original Star-Spangled Banner flag that had flown over the Fort during the 1814 British bombardment was also on display, according to Sheads.

The Lafayette bicentennial begins on August 16 in New York City and wraps up on September 8, 2025, in Washington, D.C. A variety of Baltimore events are planned for October 5-9, including a bus tour of Lafayette's

1824 route through the city, a wreath-laying ceremony at the Lafayette statue next to the Washington Monument in Mount Vernon Place, and a ticketed "farewell soiree" with period music at the Peale Museum.

The reenactment of Lafayette's arrival at Fort McHenry on October 7 begins at 1:30pm with a parade led by the U.S. Army Old Guard Fife & Drum Corps. A replica of Washington's Revolutionary War tent will be set up on the Fort grounds, and the National Guard's U.S. Army #229 Band and local singers will perform music played for Lafayette two hundred years ago. The tent, on loan from Philadelphia's Museum of the American Revolution, will be open to the public on October 5 and 6 during regular Fort hours.

To find out more about the bicentennial, visit [lafayette200.org](http://lafayette200.org). For updates on the Baltimore events, follow Lafayette Bicentennial Baltimore on Facebook. – Steve Cole

## Canton Kayak Club Opens its Newest Dock: the Cove at Baltimore Peninsula

Honestly, we've missed the Middle Branch. Friendships are made, wildlife seen, community built, all on the Peninsula's waters and our other eight docks from Baltimore to Annapolis area to Delta, PA. Whatever your adventure, from ghost ships to bald eagles to rock islands, we promise you can find those at least one of our docks. We conveniently provide you with the kayaks, the paddles, and the lifejackets. Our season runs from mid-May until late October/early November.

Join with this ad and SAVE! Enroll with Code SBPP and save \$10 on our already low membership fee.



[cantonkayakclub.com](http://cantonkayakclub.com)



# SoBo Youth-Family Support Program Set for More Growth

Two years ago, the South Baltimore Engagement Center opened in a small, leased space on Ostend Street to offer Sharp-Leadenhall families after-school and mentorship programs. Now the nonprofit that operates the center is gearing up to purchase a much larger space in SoBo for its growing number of programs and participants.

God’s Best Family, the local organization that seeks to “bridge the socioeconomic gap in Baltimore by equipping youth and their families with the support and resources they need to build bright futures and strong communities,” has filled the available space it rents in the South Baltimore Learning Center building at 28 E. Ostend Street, said Turell Brooks, president of the nonprofit.

The summer camp run by God’s Best Family – an all-day, five days per week program – has grown to 40 kids in this, its third year. “We’re at capacity,” Brooks said. The camp, whose participants range in age from kindergarten through high school, includes a weekly field trip, a computer room, play area, and tutoring. Some of the kids are working on a podcast that will interview local leaders and business owners. Brooks expects the first episode to be released this summer.

On July 20, the nonprofit sponsored its second annual “SoBo Friends and Family Day” at Solo Gibbs Park. The



The nonprofit God’s Best Family launched a campaign to buy its own building during its second annual community festival on July 20. Photo by Mary Braman.

event brought together the Sharp-Leadenhall community and residents from other peninsula neighborhoods.

The Ostend Street center hosts frequent “Chat & Chew” sessions, primarily for adults in the community. Facilitated by one or more therapists, these group discussions tackle challenging topics related to personal growth and family dynamics. The sessions now attract as many as two dozen participants, Brooks said. This month, a Chat & Chew about self-love is targeted to kids, and a session on co-parenting is planned for September.

The array of programs offered by

God’s Best Family are connected, said Brooks, in their support for the well-being of the whole family, “man, woman, and child.” Addressing the issues of each family member is key, he believes, to overcoming whatever negative space affects the family. “When you’re in a well, sometimes it’s hard to get out. And if the parents are in the well, then the kids stay in the well. Our job is to come in there with you. We’ve been in the well, and we know how to get you out of the well. If you allow us to do that, then we’re good.”

Grant support for the programs has come from the South Baltimore Gate-

way Partnership and the Baltimore City Council through a request by Councilman Eric Costello. A new grant from the United Way funds a pilot program for teenagers that started this spring, Brooks said. That program mixes group activities such as Outward Bound in Leakin Park with conversations about topics such as conflict resolution and dealing with stress. The 27 teens in the program come from across South Baltimore, including Cherry Hill, Pigtown, and Brooklyn.

The recent growth of the nonprofit is just the beginning, said Brooks. “Right now, we’re only in ‘second grade’ with God’s Best Family. We haven’t even gotten to high school yet.” The next big step – “third grade” – will be purchasing a building with plenty of space to expand into, Brooks said. He hopes that a strong fundraising push this year will have them in their own space in 2025.

The nonprofit launched a building fund campaign at the Friends and Family Day in July. Contributions are now being accepted at [givebutter.com/godsbestfamily](https://givebutter.com/godsbestfamily). Donations can also be made through Venmo and PayPal (@GodBestFamily) and Cash App (\$GodsBestFamily). – Steve Cole

## Discount Orioles Tix for SoBo Fans

SoBo residents can buy discounted tickets to most Baltimore Orioles home games. Just contact the Orioles to request the special South Baltimore Neighbors promo code (attn: Deron Marchant, [dmarchant@orioles.com](mailto:dmarchant@orioles.com), 410-547-6182), and then go online to purchase tickets at [fevo.me/sobo24](https://fevo.me/sobo24) and enter the code. – S.C.

## CHRIST LUTHERAN CHURCH

# You may have heard we had a fire.

## Don’t worry! We’re here and there’s still a place for you here.

Come find out why we’re your neighborhood church! Join us any Sunday but especially on Rally Day September 8.

Our Sunday Morning Schedule includes:

- Child-friendly Contemporary Service at 9:00 a.m.
- Fellowship at 10 a.m. and after the 11 a.m. Worship Service
- Our more Traditional Worship Service at 11 a.m.
- Education Hour at 10 a.m. re-starts in September on Rally Day



## CHRIST LUTHERAN CHURCH

701 S. Charles Street  
Baltimore, MD 21230  
410-752-7179  
[Info@christinnerharbor.org](mailto:Info@christinnerharbor.org)  
[christinnerharbor.org](https://christinnerharbor.org)  
Find us on Google Maps

All worship services offer holy communion. Worship is both in-person and online on our website, Facebook and YouTube and may be viewed anytime after the original broadcast.

Scan the QR code to see what makes us a unique part of the South Baltimore community. And visit our website to learn about our



Learning Center for 2-5 year olds. Now enrolling for the Fall Semester.

# Painting Spirits and Casting Human Figures on Light Street



The **SoBo Made** series features manufacturers and makers active on the South Baltimore peninsula. Our part of the city has long been a hub of creativity, and these articles profile firms large and small that continue that spirit.

By Rachel Cohen

Pairs of eyes glance sideways, outward, and seemingly inward from the dozens of paintings hung floor to ceiling inside the artist studio of Lania D'Agostino on Light Street at the corner of Birkhead Street.

"I draw not what I think, but what I see," D'Agostino said on a recent tour of the space where she has been creating since the mid-1990s. "I draw one mark on a piece of paper and then draw another mark; usually, the eyes first, and the rest of the figure comes out of it."

The shapes sometimes take the form of "ancestors or spirits who come [into the painting] and want to be recognized," she said, mentioning the adage, "The soul is in the eyes."

From whimsically colorful to two-tone, D'Agostino's paintings incorporate different media, from paint to embroidery with textural cross-hatchings and patterns. The figures are not female or male and are human-like but perhaps otherworldly in their fluid, clean shapes.

"Do spirits have gender?" she asked contemplatively. "I don't know, is that a thing? I think it is just fluid."

D'Agostino moved to Light Street about a decade after starting to work as an artist as a graduate of the Maryland Institute College of Art. She had spotted a for-sale sign on the then-boarded-up building while delivering art to School 33 Art Center across the street. She and fellow artist Jonathan Maxwell purchased the two-story building and adjacent rowhouse. Maxwell's studio is on the first floor (see *Peninsula Post*, October 2023). Over the years, Maxwell and D'Agostino have each lived in the rowhouse at different times, making for a convenient commute.

The corner was formerly the yard of a stone masonry shop and later a factory for Cummins Radiator Co.,



Lania D'Agostino's studio near the School 33 Art Center, where she has been creating art for three decades, accommodates her passion for both painting and sculpting life-sized castings of human figures. Photos by Mary Braman.

which is still operating locally. Beneath the high ceilings of D'Agostino's main studio – the front corner room – are exposed brick walls housing large windows draped with dark curtains against the strong midday sun. At the other end of the floor is her D'Agostino Studios, LLC, where she sculpts and assembles life-sized castings of human figures.

Across one wall of her main studio are charcoal drawings on brown craft paper, from 30-inch-wide rolls. Once D'Agostino is generally satisfied with the outline, she glues the paper onto a wooden board and then fills in the images. She developed her process by illustrating directly on architectural drawings being used as drop cloths. Some of the features of those drawings would be incorporated into the final paintings, such as a gear wheel or the layers of paint drips from previous artworks becoming texture in a dress.

Comfy seating in the middle of the room faces sculptures of some of the figures from her paintings, which D'Agostino creates when she switches over to her sculptor side for a break from painting.

On display are some of the artist's favorite portraits painted on tree-trunk cross sections with trees growing out of their heads. D'Agostino also creates on paper posted on the wall of a cabin in Pennsylvania that she owns with her partner, Heidi Yorkston, where she looks out to the woods, birds, and a creek. Trees sometimes appear in the background of her paintings, reinforcing the human connection to nature.

"Everything [in the winter woods] looks dead, but it's actually the time of regrowth; the roots are growing into the mind and soul, so drawing on wood felt appropriate," D'Agostino explained.

"It's all about the energy in the room," D'Agostino said, in talking about the time of day. "The evening is my spiritual time. The energy is calmer. It is different from the day when the energy is more physical."

Evenings are when she can be found painting in her studio.

D'Agostino said she always knew she wanted to be an artist. Even when a high school counselor suggested she become a landscape designer, she knew she wanted to sculpt and paint. She recently completed a two-month show highlighting regeneration and renewal at Full Moon Acupuncture & Apothecary in Hampden with artist Jessy DeSantis.

Most of her paintings feel peaceful, but among the most dynamic is "Sisters of Kali," named after an Indian change goddess of destruction. The painting shows three faces with their tongues out and D'Agostino's characteristic large, wide eyes. "Sometimes I tuck them away because their energy is too much," she said, adding that they usually stay behind the couch until she has a party and then the "Sisters" are brought out again.

When D'Agostino's brother passed away while deer hunting, she began including antlers on the heads of many of her portraits. Now she feels comforted by her brother's energy in them, she said.

Among D'Agostino's most successful series of paintings are her portraits of jackrabbits, which were created at a point in her life when she was going through a lot of change. She visited Santa Fe, New Mexico, and joked about wanting to find a jackrabbit. In painting the rabbits, she found some to be doll-like and in need of repair while others were ready to bound forward and move ahead, embodying the spirit of a jackrabbit. She discovered that others looking at the paintings saw the same thing, that the paintings were like self-portraits of spiritual growth.

Daytime is when she works in the sculpting shop of D'Agostino Studios. The artist has created life-cast figures for the museum industry locally, throughout the United States, and for international destinations such as the Barbican in London and the Kyoto Museum in Japan. She has worked with

the Smithsonian and Lucasfilms in designing and creating the figures for the Star Wars exhibits.

"The castings are not as much about the individual, but to tell stories within a museum," she said. The figures are cast from a live model whose body shape and pose are eventually rendered in fiberglass. The models sign a release for D'Agostino to be able to reuse the molds. For example, she used one casting she made of a Microsoft CEO for a computer museum as the head of a farmer in overalls for a different exhibit.

Rows of spare mannequins and bins of spare body parts occupy the middle studio space. They can be reassembled and sculpted over to look more natural and realistic. Some are visible from the windows along Birkhead Street, a sight that her SoBo neighbors have enjoyed over the years.

For Pride Month in June, D'Agostino placed three life-sized figures exploring the gender transition process at the entrance of her studio. Representing the physical and spiritual form, a feminine Kristen transforms into a masculine Kris. The first figure is from the day before Kristen started taking testosterone. It's a naked woman's body with the arms covering the breasts. The second is one year later and the body has slimmed down. The third is three months after top surgery and the arms rest comfortably at the sides.

"I'm also excited by models who volunteer for projects and explore themes," D'Agostino said. One of her favorites is a casting of her 30-year-old daughter when she was 12, dressed as a ballerina.

D'Agostino is coordinating with other Baltimore city artists to do an Open Studio Tour on October 5 and 6 from noon to 6pm. Her one-year goal is to present a full retrospective of her paintings, including some of her other art forms, with a performance. "We will have animal heads and costuming relating to my paintings," she said.

To learn more about D'Agostino's art, visit [laniadagostino.com](http://laniadagostino.com).



Among the sculptures packed into D'Agostino's studio is one of her daughter at the age of 12 dressed as a ballerina.

By Mark Hannon

Shipping and oceangoing travel have been part of SoBo life dating back nearly two centuries to the arrival of the B&O Railroad on the peninsula’s northern shores. From the waves of European immigrants who first set foot on American soil in Locust Point to the tons of grain, sugar, and other raw and manufactured goods coming and going, peninsula piers and docks have provided jobs for generations of Baltimoreans.

Today, the Port of Baltimore is the sixth busiest port on the U.S. Atlantic and Gulf coasts. Although much of that activity is now concentrated east and south of the peninsula, along the Patapsco River at the deep-water docks of Dundalk and Seagirt, working docks still occupy a large swath of the Locust Point shoreline.

The Peninsula Post recently visited several of these terminals and talked with longshoremen and importers to give readers an introduction to the working life of the docks of Locust Point.

That work involves an array of specialized skills and responsibilities, each one carefully choreographed to move products (or passengers) safely and efficiently on or off ships at the different private and public terminals along the north and south side of Locust Point.

**A Variety of Jobs**

The first essential step is getting an incoming ship safely docked. As a ship approaches the Port of Baltimore, it is boarded by a docking pilot,

a captain belonging to the Maryland Pilots Association, who has intimate knowledge of the channels, berths, tides, and weather conditions of the port. The docking pilot directs the helmsman and the supporting tugboats to get the vessel safely against the pier, where the ship’s deckhands will send down to the dock lightweight heaving lines attached to the heavier mooring lines. These mooring lines are then attached to bollards on the pier by line handlers hired by the terminal’s operator.

Now, the longshoremen go to work. At the public terminals in Locust Point operated by the state’s Maryland Port Administration, these are union workers, members of the International Longshoremen’s Association (ILA). The shipper begins the process by contacting a stevedoring company; Canton Stevedoring is the principal firm at the North Locust Point Terminal. The company then contacts the local union halls for whatever labor is required, and ILA members available for work are assigned to specific tasks for that ship.

Three local ILA unions handle three different types of work involved in unloading and loading ships. Local 333 represents the “longshoremen” who load and unload ships and barges with cranes and forklifts and secure the cargo.

Local 953 represents the “checkers” who have a variety of roles, including steamship clerks, weighers, billing clerks, and timekeepers. Checkers admit the trucks and trains to the dock, checking and recording their cargos, assigning them positions for storage, and scheduling them for

loading or unloading. Others “work the ship” by going over loading and unloading plans and making sure containers are loaded or unloaded in the right order and stowed in the right locations. If done incorrectly, valuable time – and time is money in the shipping business – is lost searching for a misplaced container and getting it back in the queue.

Local 1429 represents maintenance workers. According to Michael Piri-sino, president of the Maryland Line Handling Company, their duties include maintaining and repairing shipping containers, securing specialized “project” cargo on railcars, and cleaning storage sheds after cargo has shipped. They are also responsible for tying and untying the ships at their berths.

In Baltimore, being a longshoreman can be a multigenerational occupation. Some families can claim four generations on the waterfront, going back to the days when a strong back and the ability to swing a cargo hook were all that were required, despite the dangerous work environment. In those days, many workers lived within walking distance of the docks, most often from East Baltimore, South Baltimore, and Locust Point.

The Vogel family represents this tradition in Locust Point, contributing four generations of longshoremen. According to Eddie Vogel, his father, Edward Vogel, Sr., started on the waterfront in the 1940s and worked there until 1976. Eddie joined him right out of high school in 1968, and except for two years in the U.S. Army, he worked for 43 years on the docks. He started as part of a “gang,” a crew of longshoremen who manually moved cargo, then became a “driver” (moving cargo with forklifts). Eddie’s

# WORKING OF LOCUS

The Port of Baltimore is one of the busiest U.S. Atlantic and Gulf coasts. Although much of that activity is now concentrated east and south of the peninsula, working docks still occupy a large swath of the Locust Point shoreline.

son Jeff is a “lasher” (a longshoreman who secures cargo), and his grandson Gabe is a checker, both ILA members.

This port workforce is kept busy year-round handling goods and services that arrive and depart from the peninsula. Some may be familiar to you; others will surprise you. Here’s a sampling.

**Metals for Manufacturing**

Just outside the gates of Fort McHenry, the C. Steinweg (Baltimore), Inc., a subsidiary of a Netherlands-based company, has a privately owned cargo terminal which handles “break bulk” (noncontainerized) cargo from all over the world, says facility manager Marc Kiriou. A great deal of the commodities handled here are metals such as aluminum, nickel, lead, and zinc.

Storage facilities on both sides of Fort Avenue include warehouses for sensitive materials and open-air storage for ingots of aluminum. The cargos are unloaded by the ships’ own cranes at their south side berth or by



# THE DOCKS ST POINT

of the busiest ports on the  
Although much of that activity  
outh of the SoBo peninsula,  
large swath of our shoreline.

Steinweg's two 180-foot tall, 35-ton electrically operated cranes at North Locust Point Pier 1. The cargo is stowed in extensive storage facilities before being shipped out by rail or truck.

The metals brought in by Steinweg serve many purposes. Aluminum is generally used in manufacturing automobiles. Lead and nickel are used to make batteries and other finished products. Zinc is most often used for galvanizing iron and steel products to deter rusting.

## Feed for Livestock

At the foot of Hull Street, by the water taxi stop, you can't miss the giant storage tanks painted with the images of Baltimore sports legends Ray Lewis, Cal Ripken, and Michael Phelps. You may also get a whiff of molasses from one of the approximately 30 steel tanks on the grounds of the Westway Feed Products facility. One of the tanks holds up to 3 million gallons of molasses.

The molasses that Westway pro-

cesses into livestock feed comes from nearby Domino Sugar (molasses is a by-product of sugar refining) and on ships from Mexico, Belize, Guatemala, El Salvador, Honduras, and Nicaragua. It is mixed with various additives including vitamins and minerals to make animal feeds, stored, and trucked across the Mid-Atlantic. When the Peninsula Post visited, trucks were loading feed for a dairy farm of some 3,500 cows near Harrisonburg, Va. Westway employs two shifts: the first starts at 1am, the second finishes at around 3pm, so the 15-20 trucks a day they service can avoid the heaviest traffic.

Westway is getting ready to open a new production building or "mix house," according to plant manager Matt Belstra. This building is where the proportions of molasses to additives are adjusted. They also plan to replace some of the older storage tanks. When the mix house and new tanks come online, the facility's speed of production will double, Belstra said.

Westway shares the steel finger pier where the liquid bulk ships dock with BWC Terminals, which moves such items as liquid specialty chemicals, caustic soda, fertilizer, petroleum products, base oils, biodiesel, wax, and olive and vegetable oil. These products leave Locust Point by rail and truck.

## Raw Sugar

The Domino Sugar plant on Key Highway has been refining sugar at the foot of Woodall Street for over 100 years. The refinery can produce more than 6 million pounds of sugar a day and employs over 500 people who work around the clock in three shifts, says Peter O'Malley, vice president for corporate relations.

Raw sugar arrives at the refinery in bulk carrier ships from Florida, Africa, and South and Central America. Sugar is lifted from the ships' holds by clam shell buckets on two gantry cranes, which can off-load raw sugar at the rate of 1 million pounds an hour. The cranes on this pier are operated by Domino personnel. Ship-side work is handled by ILA stevedores.

When the Peninsula Post visited Domino in February, the Panamanian flagged M.V. Century Gold was bringing 33 million pounds of raw sugar from Mexico. It would take about six days to off-load, O'Malley said.

## Salt, Cables, and Cruises

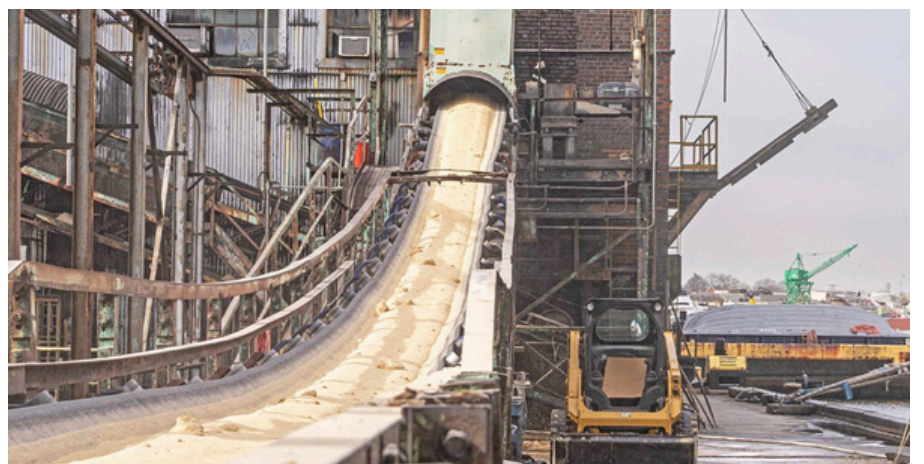
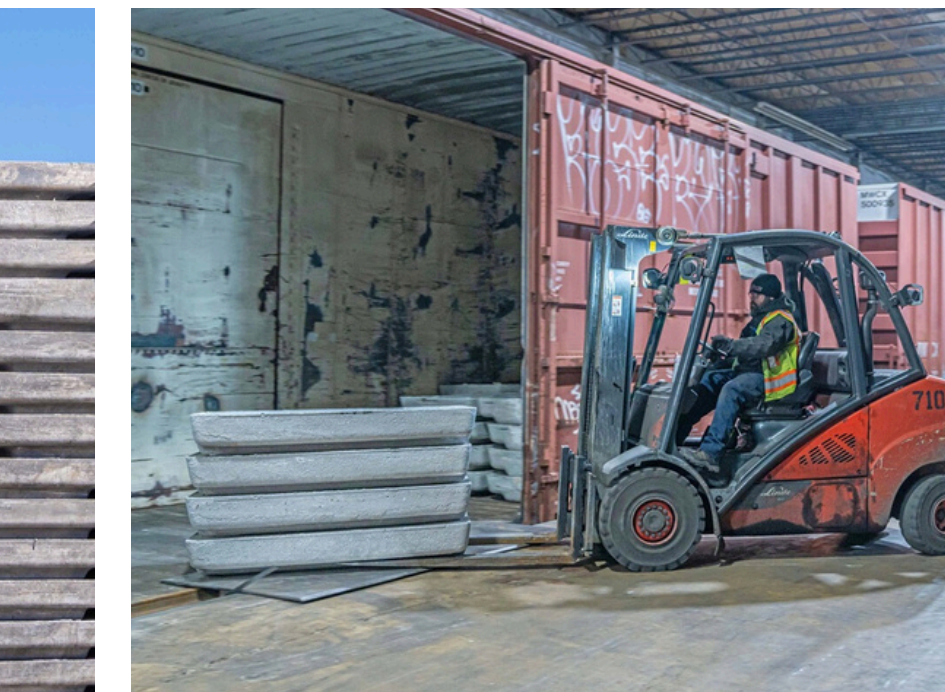
Probably the most visible Locust Point import for SoBo residents is salt – mountains of it – rising along the north side of E. Fort Avenue, just before you reach Fort McHenry. Beyond those mountains, you can see the North Locust Point Terminal's finger piers and accompanying warehouse sheds, operated by the Maryland Port Administration. The salt used on the state's highways is the largest cargo unloaded here. Paper products, wood pulp, lumber, latex, steel, and other containerized products are also moved through this terminal. These cargoes are unloaded with one container crane and two 75-ton gantry cranes.

At the South Locust Point Terminal, on the south side of Interstate 95, you can see cruise ships that offer vacation getaways. Royal Caribbean and Carnival lines offer year-round cruises, and Norwegian has a fall schedule of cruises. ILA longshoremen handle the luggage and line-handling duties here. The adjacent parking lot has room for over 1,500 cars. Opened in 2006, the cruise terminal's welcome center is located in a former paper storage shed.

Just east of the cruise terminal is the BalTerm berth and storage facility, which handles autos and paper and forest products. Low-profile general cargo ships operated by the Dutch Spliethoff Shipping Company are frequently seen here, carrying these imported products along with the occasional special cargo, such as yachts.

West of the cruise terminal, where Key Highway ends at East McComas Street, is SubCom, a firm that installs and maintains underwater fiber optic cables around the world. Their ships, docked on the long finger pier, and their crews have been called "the unsung heroes of worldwide communication," laying and servicing the cables with robotically operated vehicles.

Next time you take a walk out to the Fort, look to the right and the left just before you reach the gate and you'll see this very active part of our peninsula in a whole new light.



FAR LEFT: Westway Feed Products at the end of Hull Street uses molasses stored in dozens of tanks to mix livestock feed that is trucked across the Mid-Atlantic. CENTER BOTTOM: Three cruise lines operate out of the South Locust Point Terminal. The Royal Caribbean "Vision of the Seas" (shown here) was the first cruise ship to return to Baltimore after the Francis Scott Key bridge collapse. CENTER TOP: Ingots of various metals are one of the commodities shipped into Locust Point at the C. Steinweg (Baltimore), Inc., facility. The cargo is stowed in extensive storage facilities before being shipped out by rail or truck. ABOVE: Raw sugar is off-loaded from carrier ships at the Domino Sugar pier and moved inside the refinery by conveyor belt. All photos by Mary Braman.

SOBO PENINSULA PARENTING

As I write this column, we are facing a brutal summer heat wave. Entertaining our kiddos for the millionth day in a row inside is testing everyone’s creativity, I’m sure. It’s exciting to think that this issue of the Peninsula Post encompasses the start of fall – my favorite season – and definitely a special time of year to be a parent in SoBo. – Beth Mayr

Community Events

**Second Sundays: Riverside Park Concerts.** These fun concerts in Riverside Park continue in August and September, complete with food trucks, raffles, and more. Both my toddler and infant love bopping to the music as we picnic in the park with our friends. 5-8pm.

**September 14: Locust Point Festival.** Held in Latrobe Park, this festival sees over 2,500 people every year. Kids will love the fun music throughout the day, the big Kids Zone and playground time, and the great local food. In addition to enjoying lunch and dinner, parents can grab crushes, beer, and wine, plus gifts for every occasion at local vendors’ booths. This year, an event will follow at Fort McHenry for Defender’s Day. It’s a can’t-miss day for the whole family! 11:30am-6:30pm.

**September 28: Oktoberfest.** Way back when, German immigrants were

some of the first residents of Federal Hill, so it is fitting that there’s an Oktoberfest at Holy Cross Church (110 E. West Street) every fall. This is the 20th anniversary of the event, sponsored by the Catholic Community of South Baltimore. Complete with German food and beer, live polka band, raffles, an auction, and wheels of chance, adults will find plenty of entertainment and the kids will love the free Kids Zone with face painting, pumpkin decorating, and other fall-themed activities. My toddler was particularly impressed last year when the polka band played “Let It Go” and other Disney hits on the accordion! 11am-4pm.

Ongoing Family Fun

In my last column, I started a list of regular opportunities for family enjoyment around the peninsula (the library, Fit4Mom, music classes, children’s museums, etc.). Here are a few more:

**Baltimore Museum of Industry & Farmers’ Market.** We recently visited BMI for the first time, and I was so impressed with how engaging the museum is for children. Every room has a “touch box” that my toddler and her bestie loved, plus multiple “touch me” stations throughout the museum. Climbing through the antique car was a big hit. The touch boxes

even had toys appropriate for my infant! The Farmers’ Market is right outside the museum on Saturday mornings (9am-1pm), where there are a ton of great stands, kids’ activities, and local vendors.

**Toddler Swim at Middle Branch.** The closest opportunity for little kids to swim in the big pool seems to be Toddler Swim, just over the Hanover Street bridge at the Middle Branch Fitness and Wellness Center (201 Reedbird Avenue) on Saturday and/or Sunday mornings. Call Baltimore City Rec & Parks to confirm times and fees. Parents who have taken their kids have LOVED the experience and find it worthwhile. [bcrp.baltimorecity.gov](http://bcrp.baltimorecity.gov)

**South Baltimore Ballet.** It warms my heart to hear that a dance program is starting on the peninsula this fall. Details are still being finalized as of this writing, but be on the lookout for ballet to begin in September in the Riverside neighborhood with registration opening this month.

**Soccer.** Many peninsula kids will don soccer jerseys this fall as part of the South Baltimore Youth Soccer League. The incredible team that organizes SBYSL has an intentional focus on engaging kids ages 3-5 as they introduce them to soccer, while using a more traditional model for ages 6-18. There are coed and girls-only teams, broken down by age. Registration is open over the summer, but even if your child didn’t sign up this year, feel free to bring your kids to a game on the fields behind Francis Scott Key Elem-

tary/Middle School in Locust Point on Saturdays to check out the game, especially if they are on the fence about signing up next year. [sbysl.com](http://sbysl.com)

Back to School

**Registration.** In late August, Baltimore City Public School students and staff will return to school for the year. The citywide enrollment process is already well underway by the time you’re reading this, but if you need assistance enrolling your child in school, especially one of our fantastic public schools on the peninsula – Digital Harbor (grades 9-12), Federal Hill Prep (PK-5), Francis Scott Key (PK-8), or Thomas Johnson (PK-8) – check out their website or call the central office. [baltimorecityschools.org](http://baltimorecityschools.org)

**For new students.** The elementary/middle schools will often host events like Popsicles with the Principal and Sneak a Peek at your Seat. Be sure to reach out to your school for info on the communication tools and the calendar for the year.

**Digital Harbor High School** started a food pantry last year to support the students who need it most. Federal Hill Neighborhood Association, Federal Hill South Neighborhood Association, and the Catholic Community of South Baltimore all hosted food drives to support the students at the high school. If you’re interested in “stocking the shelves” for the students this year, please contact the Community School Site Specialist at 443-984-1256.



EVERHART  
— VETERINARY MEDICINE —



Building Relationships One Pet at a Time.

With 3 locations to serve you:

<p><b>Brooklyn Park</b> 4005 Ritchie Hwy Baltimore, MD 21225 410-355-3131</p>	<p><b>Pasadena</b> 8482 Fort Smallwood Rd Pasadena, MD 21122 410-793-7670</p>	<p><b>Cross Keys</b> 1 Village Square Suite 187 Baltimore, MD 21210 443-470-6790</p>
---	---	--







\* Mention this ad for a special gift! \*

# Neighborhood Festivals, Banners, and 'Long Days' at Fort McHenry



The South Baltimore peninsula has many neighborhood groups working to make our part of the city a great place to live. **SoBo 2GETHER** is a regular column of updates from these organizations on community projects that you can get involved in.

## Federal Hill Main Street

fedhill.org  
execdirector@fedhill.org

We are thrilled to announce that Federal Hill Main Street is a proud recipient of the **Project Restore 2.0 grant!** Project Restore 2.0 is funded by the Maryland Department of Housing and Community Development. The grant is aimed at revitalizing business districts by supporting infrastructure improvements and addressing the widespread vacancy issue by facilitating small businesses' entry into the market with funds for rent and renovations.

This significant milestone will greatly enhance our ability to support new businesses coming into our district and address the many vacancies here. With this funding, we are poised to make a lasting impact on our vibrant community.

In June, we launched our **new and improved website**, marking a major step forward in our efforts to support and connect the Federal Hill community. Our interactive map helps residents and visitors explore everything our neighborhood has to offer, from dining spots to unique shopping experiences. Metrics show that it has already become a valuable asset to our patrons and businesses.

Looking ahead to the fall, we have several exciting events planned. At **Sweet Tooth Saturday**, you'll be able to indulge in treats from local bakeries and confectioneries. Our **Fall Cleaning Event** will bring together residents and business owners to spruce up Federal Hill, ensuring it remains a great place to live, work, and visit.

We are incredibly excited for the many milestones our organization has hit this year and the ones our whole community has to look forward to!

Stay tuned for more details and updates on these events and others by visiting our new website at fedhill.org. We look forward to seeing you online and at our upcoming events! – Submitted by Taylor Schwartz, Executive Director

## Federal Hill Neighborhood Association

federalhillbaltimore.org  
president@federalhillbaltimore.org

FHNA is currently on our summer recess. Our monthly meetings will return in September. We scheduled an **information session** on July 30 with MCB Real Estate, the developer of the proposed Harborplace redevelopment, and the Inner Harbor Coalition, a group that opposes the MCB proposal.

Our **transportation committee** successfully led the effort to improve the intersection of Light Street and Warren Avenue with a crosswalk, bumpouts, and ADA-compliant curb cuts. The next intersection on our to-do list is Light and Hamburg streets. The proposed improvements received unanimous neighborhood association support and widespread support from neighbors and businesses we canvassed near the intersection. They also received a letter of support from the Federal Hill Prep Elementary Parent-Teacher Organization (the intersection is frequently used by Prep students).

Our **public safety, social, and tree-planting committees** remain active over the summer. If you would like to get involved, please email info@federalhillbaltimore.org.

We are expecting to **plant 22 trees** in Federal Hill Park this fall. Be on the lookout for a planting date, as we can always use more volunteers!

We are continuing to hold **monthly happy hours** on the third Wednesday of each month with the Federal Hill South Neighborhood Association and South Baltimore Neighborhood Association. August's event falls on the 21st.

Lastly, we encourage everyone to sign up for our **monthly newsletter** at federalhillbaltimore.org. There's a lot going on in Federal Hill, so stay informed! – Submitted by Zac Blanchard, President

## Historic Sharp-Leadenhall Community

bettyblandthomas@comcast.net

The annual **Heritage Festival** in Solo Gibbs Park is coming up on Saturday, August 10, from 1 to 5pm. This celebration of Black history and culture will feature live music, free food, haircuts and braiding, and lots of activities for kids, including face painting, balloon animals, and a moon bounce. A libation ceremony



The annual Locust Point Festival, organized by the Locust Point Civic Association, returns to Latrobe Park on September 14. Photo by Mary Braman.

will bring attendees together to recognize people in their lives who have passed recently. Community resources will be available from the city Health Department, and the League of Women Voters will be registering people to vote. We hope to see you at the festival, which is organized by the Historic Sharp-Leadenhall Community. And if you'd like to volunteer to help with the event, email us at the address above.

New **street banners** will soon be coming to neighborhood streets to proudly mark the boundaries of our historic community. Over 40 of the large, colorful vinyl signs will be hung on light posts by this fall. This project was funded through a \$25,000 grant from the South Baltimore Gateway Partnership.

Keeping the history of Sharp-Leadenhall alive is the goal of several public events we're sponsoring in the next few months. A series of three **walking tours** in August and September will provide insights into the history as well as current issues facing our community and our neighboring communities of Otterbein and Federal Hill. And a **lecture series** is being planned for August and October. Keep an eye on the Peninsula Post's online SoBo Events calendar for details (sobopost.org/events).

**Cleaning and greening efforts** around the neighborhood continue with our dedicated team of community members who sweep and pick up trash twice a week. This work is supported by a \$20,000 grant from United Way.

Our **community meetings** are held the fourth Thursday of each month from 6 to 7:30pm at Martini Lutheran Church (100 W. Henrietta Street). We'd love to see you there! – Information provided by Betty Bland-Thomas, President

## Key Highway Community Association

keyhca.org  
keyhca@gmail.com

KHCA held its **quarterly general meeting** on June 19 with a presentation by Britt Hayes and Demetric Gillespie from the Thread program. They discussed this volunteering opportunity for those who want to support high school students. This was followed by Michael Brassiter's update on what Inner Harbor Coalition put forth as objections regarding MCB Real Estate's proposal for redeveloping Harborplace. There were many questions as well as information brought up by the audience which underscored the opinions, views, and questions on the subject, pro and con.

Additionally, there was an update on the **under-lighting of the Fort Avenue bridge** over Key Highway. A grant has been approved by Baltimore City facilitated by Councilman Eric Costello so that netting to deter pigeons from destroying the equipment can be installed.

Our next meeting on September 18 will include a presentation by MCB Real Estate to provide information in support of the project. – Submitted by Janan Broadbent, President

## Locust Point Civic Association

mylocustpoint.org  
contacts@mylocustpoint.org

The third LPCA summer **"Long Days" at Fort McHenry** will be held on August 21. The theme will be Action-Art in the Park. This is a painting project, where participants can paint whatever they want with an instructor who will help you put your thoughts and ideas on paper. Materials will be

Continued on page 10

KEYGROUP  
OF CUMMINGS & CO. REALTORS

YOUR  
LOCAL  
REAL ESTATE  
TEAM

201 KEY HIGHWAY  
410.823.0033  
KEYGROUPPMD.COM

Ruff + Stay  
DOG BOARDING, DAYCARE, AND MORE.

A BOUTIQUE DOG BOARDING  
AND DAYCARE FACILITY

RUFFSTAYDOGS.COM

@RUFFSTAYDOGS

SCAN HERE



Erie Insurance®

Above all in sERvice® – since 1925

Auto • Home • Business • Life

Celebrating 25 years in the neighborhood!

WE KNOW SOBO

Call us for a quote today.

Upper Chesapeake Insurance

900 S Charles Street  
Baltimore, MD 21230  
insuranceinfo@eriequote.com  
410-385-0455

5882ap: Not all companies are licensed or operate in all states. Not all products are offered in all states. Go to erieinsurance.com for company licensure and territory information.



Monument | Sotheby's

INTERNATIONAL REALTY

IF YOU ARE  
LOOKING TO BUY  
OR SELL YOUR  
HOME,  
CONTACT YOUR  
LOCAL EXPERTS

List Residential Group of  
Monument Sotheby's  
International Realty  
801 Key Highway, #831  
Baltimore, Maryland 21230  
410.525.5435

Chevelle Welsh  
VICE PRESIDENT & TEAM LEADER  
410.967.9498

Taylor Welsh  
REALTOR®  
410.868.6668

R

REALTOR®

UPPER CHESAPEAKE

Each office is independently owned and operated.

SOBO 2GETHER, continued from page 9

provided; be sure to wear appropriate clothing. There will also be a ranger talk about historical events. The park will be open until 8pm. Visitors are welcome to bring blankets and lawn chairs along with their picnic dinners and just enjoy the beauty of the Baltimore harbor.

The **Locust Point Festival** is set for September 14 from 11am to 6pm at Latrobe Park. In years past, we've had an amazing array of local wares to choose from, including jewelry, print art, holiday ornaments, soaps, makeup, packaged food, ceramics, apparel, as well as a farmers' market. There will be food from local restaurants, drinks, and live music. Bring chairs and enjoy the festival with your friends and family.

September 14 is also **Defenders' Day** at Fort McHenry with events going on all day, culminating with music and fireworks. There will be a free shuttle from 1 to 6 pm between the Festival and the Fort.

The next **LPCA membership meetings** will be held on August 14 at the Knights of Columbus building and on September 11 at Francis Scott Key Elementary/Middle School. Both meetings will start at 7:30pm.

For more information about these events or other happenings in Locust Point, go to [mylocustpoint.org](http://mylocustpoint.org). – Submitted by Dave Arndt, Board Member

ments in Riverside Park, including playground mats, a new bench, and trash can upgrades.

Neighbors and visitors to our community will soon see Riverside street banners and an upgraded website, also made possible by an earlier SBGP grant. Graphic design services for these projects were provided by the Cohere agency of Baltimore. RNA is pleased to work with SBGP to fund new, specialized bicycles for officers of the Baltimore Police Department's Southern District.

The next regular business meeting of the Association is on September 30. (There is no August meeting.) If you are interested in becoming involved with RNA, drop us an email or visit our website (see above). – Submitted by Rich Badmington

**South Baltimore Neighborhood Association**  
[mysobo.org](http://mysobo.org)  
[executive\\_board@mysobo.org](mailto:executive_board@mysobo.org)

SBNA welcomed Del. Luke Clippinger to our **general membership meeting** on July 9. Del. Clippinger shared information on legislation impacting South Baltimore residents, including juvenile justice reform and property tax rates on abandoned buildings in Baltimore City.

The next **Community Dumpster Day** will be held on Saturday, August 17, and will coincide with a neighborhood cleanup event. If you are interested in participating in the cleanup event, please contact Jen at [Jennifer.eastman@mysobo.org](mailto:Jennifer.eastman@mysobo.org) for the latest information.

Do you have an idea for a **community improvement project**? SBNA is happy to support you! The South Baltimore Gateway Partnership's Community Grants process is open until August 31. The application process is simple, and funding can be used for many different activities that benefit the neighborhood, including greening projects, public safety, and community events. Contact the Board at the email above to schedule a time to discuss your ideas.

SBNA will **NOT** have a general membership meeting in August. We will resume our monthly meetings on September 10 at AJ's on Hanover at 7pm. MCB Real Estate, the entity responsible for the redevelopment of the Inner Harbor, is scheduled to attend to provide an update on its progress and answer questions from community members. – Submitted by Jen Eastman, Vice President

**Riverside Neighborhood Association**  
[riversideneighborhoodassociation.com](http://riversideneighborhoodassociation.com)  
[rnabaltimore@gmail.com](mailto:rnabaltimore@gmail.com)

**August, September Concerts at Riverside Park** – Make plans to attend the last two free concerts with live bands at the Riverside Park gazebo and enjoy the tree-shaded lawns. The band on August 11 is Get Steady, and on September 8 we host the Tom Starr Band. Food trucks include Fuzzies, Little Havana, and Miss Twist. Beer is provided by M8. The concerts are co-ordinated by RNA volunteers and the Friends of Riverside Park. We are grateful (again) to Domino Sugar for their financial support that makes the concerts possible and to M8, our new beer sponsor.

Music begins at 5pm and continues until 8pm. Bring the kids, a lawn chair, and friends. Beer and wine sales benefit RNA.

In other news from the Association, we extend our appreciation to the South Baltimore Gateway Partnership for their recent grant that will allow us to make more improve-

**Erick Sowell, LCSW-C**  
Licensed Certified Social Worker-Clinical  
1414 Key Highway, Suite 300  
Baltimore, MD 21230  
[sowellsocialwork.org](http://sowellsocialwork.org)

**Specializing in  
Individual &  
Relationship Therapy**  
  
**Offering In-Person &  
Telehealth Sessions**

*Schedule  
Free  
Consultations*

Our "Peninsula Puzzler" is on summer break.  
Look for #4 in our October 4 issue.

# SOBO EVENTS

Continued from page 1

8/8 – **Let’s Science Happy Hour**, Maryland Science Center, 601 Light St. Join The Wine Collective for a sampling of their wines. 7-9pm. \$

8/9 – **Outdoor Movie: ‘House Party,’** The Lawn on E. Cromwell St., next to Rye Street Tavern, Baltimore Peninsula. 6-10pm.

8/9 – **Monthly Bingo**, The Church of the Redemption, 1401 Towson St. Doors at 6pm, bingo at 7pm.

8/9 – **Music: Sam Cochran’s Phish Set and California Magic**, The 8x10, 10 E. Cross St. Doors at 7pm. \$

8/10-11 – **Mess Fest**, Maryland Science Center, 601 Light St. Celebration of mucky, slimy, sticky, and sloppy science. 12-4pm. \$

8/10 – **BMI Farmers’ Market**, Baltimore Museum of Industry, 1415 Key Hwy. 9am-1pm.

8/10 – **Inner Harbor SUP Tour**, Inner Harbor Marina, 400 Key Hwy. Tour the harbor on a paddleboard. 9am. \$

8/10 – **Boards & Breakfast**, Rash Field Park, 201 Key Hwy. Skateboarding lessons for young kids with Joey Jett at Jake’s Skatepark. 9-11am.

8/10 – **Heritage Festival**, Solo Gibbs Park, 1044 Leadenhall St. Face painting, live music, food, and community resources. Sponsored by Historic Sharp-Leadenhall Community. 1-5pm.

8/10 – **Summer Fest with Bryson Tiller and Muni Long**, Baltimore Peninsula, 101 W. Dickman St. Outdoor music festival. 5-11pm. \$

8/11 – **Music: Get Steady**, Riverside Park gazebo, 301 E. Randall St. Live music and food trucks. 5-8pm.

8/11 – **Music: Tom Hamilton**, The 8x10, 10 E. Cross St. Doors at 7pm. \$

8/12 – **DAB TCG Adventures**, Pratt Library, 1251 Light St. Interactive music, dance, and puppet show. 10:30am.

8/12 – **Community Walk with BPD**, Riverside Park gazebo, 301 E. Randall St. Connect with neighbors and Southern District community officers. 5pm.

8/12 – **Wellness on the Waterfront: Boot Camp**, Rye Street Park, 301 E. Cromwell St. Outside 45-minute class with Marissa Walch. 6pm.

8/14 – **Inner Harbor Paddle and Flow**, Inner Harbor Marina, 400 Key Hwy. Guided 45-minute paddle followed by yoga on land. 6-7:30am. \$

8/14 – **Guerilla Art**, Pratt Library, 1251 Light St. Teens use different media and a variety of upcycled materials to create art. 3pm.

8/14 – **Wellness on the Waterfront: Yoga**, Rye Street Park, 301 E. Cromwell St. Outside 45-minute vinyasa (flow) class with Marissa Walch. 6pm.

8/14 – **Sunset Salsa**, Port Covington Marina, 321 E. Cromwell St. Latin dance lessons and music, with local food and drink. 7-11pm.

8/14 – **Locust Point Civic Assoc. General Meeting**, Francis Scott Key Elementary/Middle School, 1425 E. Fort Ave. 7:30pm.

8/15 – **Golf Tournament Fundraiser** for God’s Best Family, Compass Pointe, 9010 Fort Smallwood Rd., Pasadena. 9am-4pm. \$

8/15 – **Community Run/Walk**, Harry’s Bar, 1036 E. Fort Ave. Distance 3-6 miles. 6:30pm.

8/16 – **Edible Story Time**, Pratt Library, 1251 Light St. Stories, songs, and crafts all about cookies. 11am.

8/16 – **Music: Noah Pierre Band** with Brent Birkhead and Maya Elizabeth, The 8x10, 10 E. Cross St. Doors at 7pm. \$

8/16 – **Riverside Comedy Night**, Salem Lutheran Church, 1530 Battery Ave. Improv show with three Baltimore acts. 7-9pm. \$

8/16 – **Music Under the Dome: Queen**, Maryland Science Center, 601 Light St. Immersive planetarium show. 7-10pm. \$

8/17 – **BMI Farmers’ Market**, Baltimore Museum of Industry, 1415 Key Hwy. 9am-1pm.

8/17 – **Inner Harbor SUP Tour**, Inner Harbor Marina, 400 Key Hwy. Tour the Inner Harbor on a paddleboard. 9am. \$

8/17 – **Wildlife Gardening: Plastic Land**, Rash Field, 201 Key Hwy. 10am-2pm.

8/17 – **Friends of the Light Street Branch monthly meeting**, Pratt Library, 1251 Light St. 11am.

8/17 – **Music: John Lamkin Favorites Jazz Quartet**, Baltimore Museum of Industry, 1415 Key Hwy. 11:30am-1pm.

8/17 – **Whiskey on the Waterfront**, Sagamore Spirit, 301 E. Cromwell St. Live music, food, and beverages. 12-6pm.

8/18 – **Inner Harbor Paddle Kayak Tour**, Maryland Science Center promenade, 401 Light St. Guided tour for experienced paddlers. 9am-12pm. \$

8/18 – **Federal Hill Beyond the Views: A Monumental City Tour**, Federal Hill Park, 301 Warren Ave. 9:30-10:30am. \$

8/19 – **Preschool Music Class**, Pratt Library, 1251 Light St. Hosted by South Baltimore Music Academy. 10:30am.

8/19 – **Wellness on the Waterfront: Boot Camp**, Rye Street Park, 301 E. Cromwell St. Outside 45-minute class. 6pm.

8/21 – **Inner Harbor Paddle and Flow**, Inner Harbor Marina, 400 Key Hwy. Guided 45-minute paddle followed by yoga on land. 6-7:30am. \$

8/21 – **Extended Hours at the Fort**, Fort McHenry, 2400 E. Fort Ave. Park open until 8pm.

8/21 – **Music Class for Babies and Toddlers**, Salem Lutheran Church, 1530 Battery Ave. Hosted by South Baltimore Music Academy; registration required. 10:30am.

8/21 – **Qigong: Moving Meditation**, Pratt Library, 1251 Light St. Decrease stress and increase vitality. 1pm.

8/21 – **Wellness on the Waterfront: Yoga**, Rye Street Park, 301 E. Cromwell St. Outside 45-minute vinyasa (flow) class with Marissa Walch. 6pm.

8/21 – **Sunset Salsa**, Port Covington Marina, 321 E. Cromwell St. Latin dance lessons and music, with local food and drink. 7-11pm.



Tour the Inner Harbor on a stand-up paddleboard. Photo by Mary Braman.

8/22 – **Glimmer in the Garden**, American Visionary Art Museum, 600 Key Hwy. After-hours event in the Sculpture Garden with crafts and cocktails. 6:30-9:30pm. \$

8/22 – **Community Run/Walk**, Harry’s Bar, 1036 E. Fort Ave. Distance 3-6 miles. 6:30pm.

8/23 – **Music: WAX with The Palmer Squares, The Grilled Lincolns, JARV, and Nahte Renmus**, The 8x10, 10 E. Cross St. Doors at 7pm. \$

8/23 – **Stand-Up Comedy Show**, Checker-spot Brewing, 1421 Ridgely St. 8pm. \$

8/24 – **BMI Farmers’ Market**, Baltimore Museum of Industry, 1415 Key Hwy. 9am-1pm.

8/24 – **Community Dumpster Day**, Fort Ave. and Andre St. Sponsored by the Locust Point Civic Association. 8am.

8/24 – **Inner Harbor SUP Tour**, Inner Harbor Marina, 400 Key Hwy. Tour the Inner Harbor on a paddleboard. 9am. \$

8/24 – **Music: Bob Burke**, Pratt Library, 1251 Light St. 3pm.

8/24 – **Music: Moran Tripp, Dwayne Haggins, and Lower Case Blues**, The 8x10, 10 E. Cross St. Doors at 7pm. \$

8/25 – **Inner Harbor Paddle Kayak Tour**, Maryland Science Center promenade, 401 Light St. Guided tour for experienced paddlers. 9am-12pm. \$

8/25 – **Lettuce Grow Some Food**, Maryland Science Center, 601 Light St. Conduct experiments on water transport, discuss resource conservation, and create your own hydroponic system. 1-4pm. \$

8/26 – **Wellness on the Waterfront: Boot Camp**, Rye Street Park, 301 E. Cromwell St. Outside 45-minute class with Marissa Walch. 6pm.

8/28 – **Inner Harbor Paddle and Flow**, Inner Harbor Marina, 400 Key Hwy. Guided 45-minute paddle followed by yoga on land. 6-7:30am. \$

8/28 – **Wellness on the Waterfront: Yoga**, Rye Street Park, 301 E. Cromwell St. Outside 45-minute vinyasa (flow) class with Marissa Walch. 6pm.

8/28 – **Sunset Salsa**, Port Covington Marina, 321 E. Cromwell St. Latin dance lessons and music, with local food and drink. 7-11pm.

8/29 – **Community Run/Walk**, Harry’s Bar, 1036 E. Fort Ave. Distance 3-6 miles. 6:30pm.

8/29 – **8th Annual Baltimore Comedy Fest**, Pratt Library, 1251 Light St. 6:30-8:30pm.

8/30 – **Music: All You Need, Shuttlecraft, Weekends at Noon, and With Us or Against Us**, The 8x10, 10 E. Cross St. Doors at 7pm. \$

8/31 – **BMI Farmers’ Market**, Baltimore Museum of Industry, 1415 Key Hwy. 9am-1pm.

8/31 – **Inner Harbor SUP Tour**, Inner Harbor Marina, 400 Key Hwy. Tour the Inner Harbor on a paddleboard. 9am. \$

8/31 – **Asia In a Bite Food Festival**, Rash Field, 201 Key Hwy. 11am-8pm.

8/31 – **Music: Old Head, 3 Fifths, and Parker**, The 8x10, 10 E. Cross St. Doors at 7pm. \$

9/1 – **Inner Harbor Paddle Kayak Tour**, Maryland Science Center promenade, 401 Light St. Guided tour for experienced paddlers. 9am-12pm. \$

9/1 – **Collective Minds Festival**, West Covington Park, 101 W. Cromwell St. House music festival. 12pm. \$

9/1 – **Pickup Softball Game**, Solo Gibbs Park, 1044 Leadenhall St. Sponsored by Catholic Community of South Baltimore. 1-2pm.

Continued on page 12

# MUSIC LESSONS!

Children & Adults

Enrollment Open!

Piano • Guitar  
Violin & more!

SouthBaltimoreMusic.com



# Chat, text or stop by. It's called service.



## Eve Hamper Agent

1118 Light Street  
Suite A  
Baltimore, MD  
21230-4141

Bus: 410-528-8900  
eve@evehamper.com  
www.evehamper.com

State Farm  
Bloomington, IL





# CHECK OUT OUR SPONSORS!

The SoBo Softball League wants to thank our sponsors and players for a great spring season! Follow us on Instagram @sobo\_softball to keep up on bar specials, league news, and other fun things going on in the South Baltimore softball world!

## TEAM SPECIALS

**Mother's**  
BOGO boneless wings every Monday!

**Delia Foley's**  
\$2 off all mac n' cheeses & \$12 Miller Lite pitchers every Monday!

**Mick O'Shea's**  
\$2 off wings, tenders, crab dip, nachos, & quesadillas during happy hour M-F 5-7!

**Rowan Tree**  
Natty Lite or Boh + Rumble Minze \$7 Sunday-Thursday!

**Mum's**  
Get a Boh + a shot of Evel (a #1) at Mum's anytime for \$7!

**Signal Barbershop**  
Get a cut at the best barber shop in SoBo!

**Riverside Taphouse**  
Cheesesteak specials every Monday!

**Magerks**  
Monday Happy Hour 5-7 \$3 White Claws, \$5 White Tea Shots, 32oz Beers \$7!

**Hair of the Dog**  
BOGO 1/2 off all apps every Monday!

# THANK YOU



For all updates, stats, game recaps and more!  
Follow us on

Instagram: @sobo\_softball

Email us at: sobosoftball@gmail.com  
for LEAGUE opportunities.

### EVENTS, continued from page 11

9/4 – **Inner Harbor Paddle and Flow**, Inner Harbor Marina, 400 Key Hwy. 6-7:30am. \$

9/4 – **Wellness on the Waterfront: Yoga**, Rye Street Park, 301 E. Cromwell St. 6pm.

9/4 – **Sunset Salsa**, Port Covington Marina, 321 E. Cromwell St. Latin dance lessons and music. 7-11pm.

9/5 – **Jazzy Summer Nights: Goapele**, West Covington Park, 101 W. Cromwell St., Baltimore Peninsula. 5-10pm. \$

9/5 – **Community Run/Walk**, Harry's Bar, 1036 E. Fort Ave. 6:30pm.

9/5 – **Music: Last Fair Deal with Tennessee Lamb**, The 8x10, 10 E. Cross St. Doors open at 7pm. \$

9/7 – **BMI Farmers' Market**, Baltimore Museum of Industry, 1415 Key Hwy. 9am-1pm.

9/7 – **Inner Harbor SUP Tour**, Inner Harbor Marina, 400 Key Hwy. Tour the Inner Harbor on a paddleboard. 9am. \$

9/8 – **Inner Harbor Paddle Kayak Tour**, Maryland Science Center promenade, 401 Light St. Guided tour for experienced paddlers. 9am-12pm. \$

9/8 – **Music: Tom Starr Band**, Riverside Park gazebo, 301 E. Randall St. Live music and food trucks. 5-8pm.

9/9 – **Wellness on the Waterfront: Boot Camp**, Rye Street Park, 301 E. Cromwell St. 6pm.

9/10 – **Kitchen Science**, Pratt Library, 1251 Light St. Science experiments using common household items. 3pm.

9/11 – **Inner Harbor Paddle and Flow**, Inner Harbor Marina, 400 Key Hwy. 6-7:30am. \$

9/11 – **Wellness on the Waterfront: Yoga**, Rye Street Park, 301 E. Cromwell St. 6pm.

9/11 – **Sunset Salsa**, Port Covington Marina, 321 E. Cromwell St. Latin dance lessons and music. 7-11pm.

9/12-15 – **Pride of Baltimore II Deck Tours**, Fort McHenry, 2400 E. Fort Ave. Talk to the crew and a park ranger about the War of 1812, privateers, and more.

9/12 – **Painting with Alcohol Inks**, Pratt Library, 1251 Light St. Make a one-of-a-kind artwork with Esta Baker. 6pm.

9/13 – **McHenry Row Block Party**, 1215 E. Fort Ave. 4-9pm.

9/13 – **Monthly Bingo**, The Church of the Redemption, 1401 Towson St. Doors at 6pm, bingo at 7pm.

9/13 – **Music: You Oughta Know** (Alanis Morissette tribute), The 8x10, 10 E. Cross St. Doors at 7pm. \$

9/14-15 – **Defenders' Day**, Fort McHenry, 2400 E. Fort Ave. Family-friendly activities including fife and drum corps.

9/14 – **BMI Farmers' Market**, Baltimore Museum of Industry, 1415 Key Hwy. 9am-1pm.

9/14 – **Boards & Breakfast**, Rash Field Park, 201 Key Hwy. Skateboarding lessons for young kids with Joey Jett. 9-11am.

9/14 – **Locust Point Festival**, Latrobe Park. Food, vendors, games, and music. 11am-6pm.

9/14 – **Soul Food: The R&B Festival and Picnic**, West Covington Park, 101 W. Cromwell St., Baltimore Peninsula. 2-9pm. \$

9/15 – **Federal Hill Beyond the Views: A Monumental City Tour**, Federal Hill Park, 301 Warren Ave. 9:30-10:30am. \$

9/17 – **Light Street Lab**, Pratt Library, 1251 Light St. Hands-on STEAM activities for kids. 3pm.

9/21 – **BMI Farmers' Market**, Baltimore Museum of Industry, 1415 Key Hwy. 9am-1pm.

9/21 – **Wildlife Gardening: Frogs with Friends**, Rash Field, 201 Key Hwy. 10am-12pm.

9/21 – **Music: John Lamkin Favorites Jazz Quartet**, Baltimore Museum of Industry, 1415 Key Hwy. 11:30am-1pm.

9/21 – **Whiskey on the Waterfront**, Sagamore Spirit, 301 E. Cromwell St. Live music, food, and beverages. 12-6pm.

9/21 – **Boat Around the Middle Branch**, City Garage, 101 W. Dickman St. Learn about the Reimagine Middle Branch plans while touring the Patapsco River via a water taxi. 2-4pm.

9/21 – **Music: Son del Sur**, Pratt Library, 1251 Light St. 3pm.

9/22 – **Olmsted Park Tour**, Latrobe Park, 1627 E. Fort Ave. Guided tour of the park led by Cheryl Duffy. 11am.

9/26 – **History on the Rocks**, Baltimore Museum of Industry, 1415 Key Hwy. After-hours event for adults with cocktails and interactive exhibits. 6:30-9pm. \$

9/28 – **Fee-Free Admission to Fort McHenry**, 2400 E. Fort Ave. No admission in honor of National Public Lands Day.

9/28 – **Ya Gotta Regatta**, Downtown Sailing Center, 1425 Key Hwy. 8am-4pm.

9/28 – **Asia In a Bite Food Festival**, Rash Field, 201 Key Hwy. 11am-8pm.

10/3 – **Jazzy Summer Nights: The LFTOVRZ**, Baltimore Peninsula, 101 W. Cromwell St. 5-10pm. \$

10/4 – **Peninsula Post Issue #21 release**, available free at outlets all over SoBo

10/5 – **BMI Farmers' Market**, Baltimore Museum of Industry, 1415 Key Hwy. 9am-1pm.

10/5 – **Crab Feast**, Knights of Columbus, 1338 Hull St. 3pm. \$

### Solution to Peninsula Puzzler #3

30 SoBo "watering holes" were hidden in our June 2024 issue word search.



# DUO

## SIGNAGE + GRAPHICS

CREATE THE MOST **IMPACTFUL** AESTHETIC FOR  
YOUR BUSINESS — INSIDE AND OUT!

 duo\_graphics

410-927-5424

info@duo-graphics.com